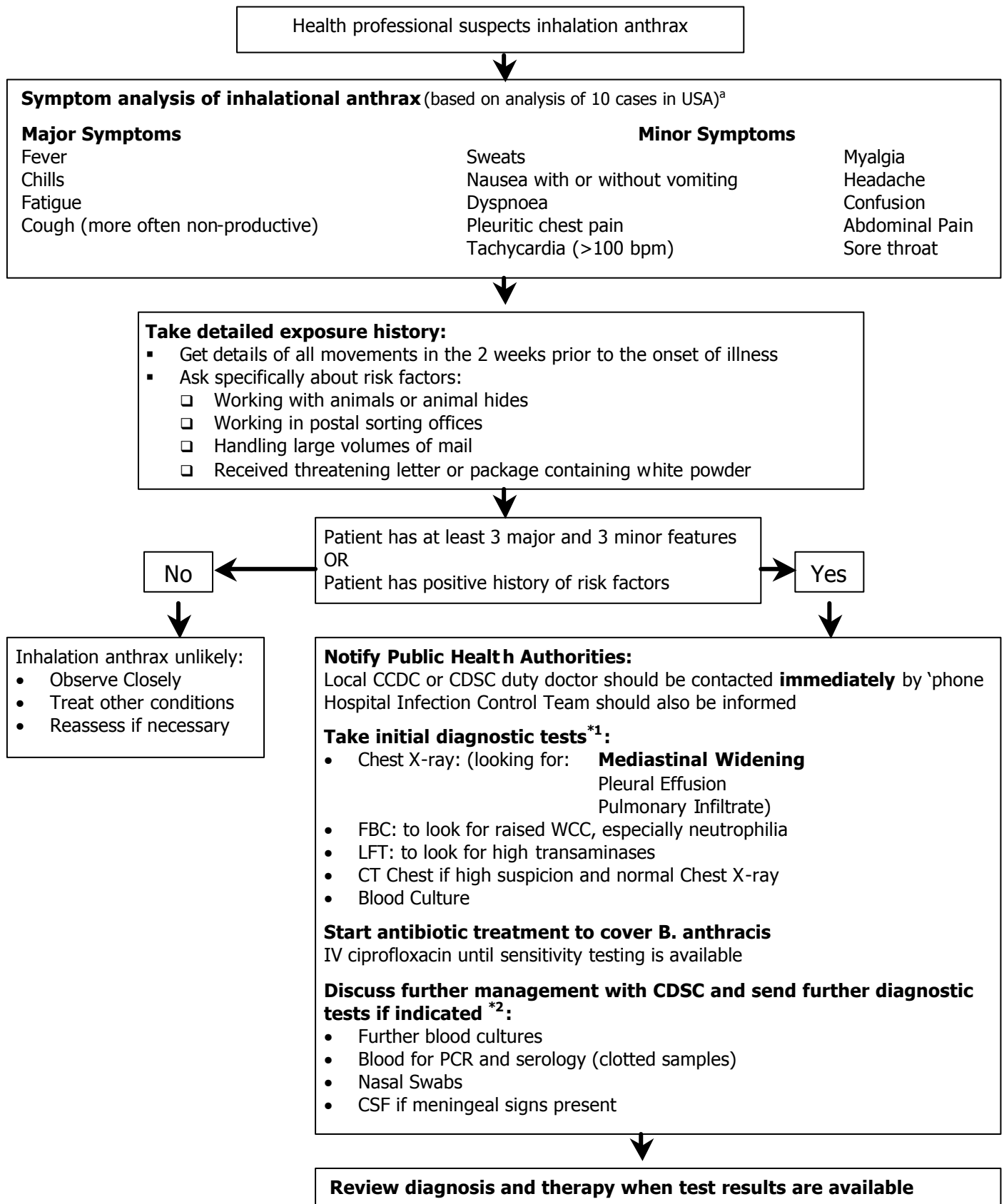


Clinical evaluation and management of people with possible inhalation anthrax



* Gloves should be worn when microbiological specimens are taken. Samples should be labelled as 'High Risk' and handled according to local protocols. The microbiology laboratory should be notified of the suspected diagnosis and told to expect the sample.

1 Microbiological specimens to local laboratory; if Gram positive bacilli are isolated, or bacterial colonies are grown, these should be sent to the Reference laboratory.

2 Microbiological specimens to Reference laboratory.

a Jernigan JA et al, Bioterrorism related inhalational anthrax: the first 10 cases reported in the United States. Emerging Infectious Diseases, 2001;7(6):933-44. Access at <http://www.cdc.gov/ncidod/eid/vol7no6/jernigan.htm>